

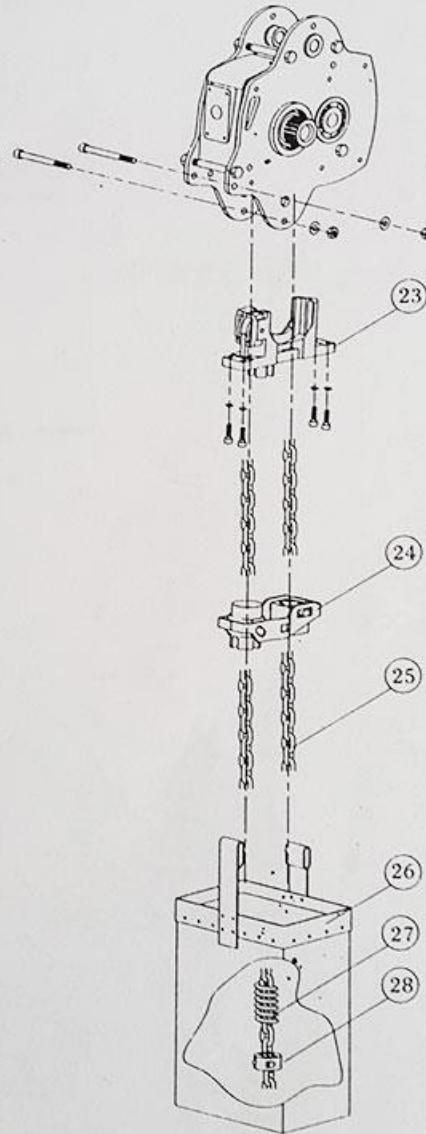
# LIFTKING ELECTRIC CHAIN HOIST

S/N	PART NAME	QTY	REMARK	S/N	PART NAME	QTY	REMARK	
1	Hexagonal circular bolt	4		36	chain wheel	1		
2	spring gasket	4		37	Oil seal	1		
3	gearbox base cover	1		38	Deep groove ball bearing	1		
4	Gasket of gearbox base	1		39	Output shaft assemble	1		
5	Hexagonal circular bolt	4		40	Bearing fixed ring	1		
6	Serrated gasket	4		41	Deep groove ball bearing	1		
7	gearbox base cover pin	1		42	Internal circlip	1		
8	Lifting eyebolt	1		43	Hexagonal bolt	1		
9	lifting eyebolt gasket	1		44	Ring	1	matched	
10	gearbox	1			up hook assembly	1	by choose	
11	Notch countersink bolt	6		45	Slotted hex nuts	1		
12	wiring fixing ring	1		46	Cotter pin	1		
13	wiring fixing ring fittings	1		47	side cover gasket	1		
14	Deep groove ball bearing	1		48	side cover	1		
15	Washer on shaft	1		49	Hexagonal circular bolt	4		
16	Output gear	1		50	Base plate of motor	1		
17	Deep groove ball bearing	1		51	spring gasket	4		
18	Gear-gear shaft	1		52	Nut	4		
19	Deep groove ball bearing	1		53	Bushing	2		
20	Gearbox gasket	1		54	Motor case gasket	1		
21	Hexagonal circular bolt	6		55	Fitting pin	2		
22	spring gasket	6		56	Hexagonal awl bolt	1		
23	Fitting pin	2		57	spring gasket	4		
24	Hex bolt	2		58	Hexagonal circular bolt	4		
25	Hex bolt gasket	2		59	Motor case	1		
26	Middle pieces	1		60	motor stator	1		
27	Middle pieces gasket	1		61	motor rotor	1		
28	Panel bolts	4		62	motor axle	1		
29	Fitting pin	2		63	disc spring	1	big	
30	gearbox base plate	1		64	guide block	1		
31	Connection joint	4		65	Two-piece ring	2		
32	connection box gasket	1		66	Fixing ring	1		
33	connection box	1		67	Brake spring	1		
34	Deep groove ball bearing	1		68	Brake assembly	1		
35	Oil seal	1		69	disc spring	4	small	
				BOM				
SYM	INT.	CHANGE NO.	DATE	SIGN		DWG.SYM.		
DR		INSP.		APP.				



# LIFTKING ELECTRIC CHAIN HOIST

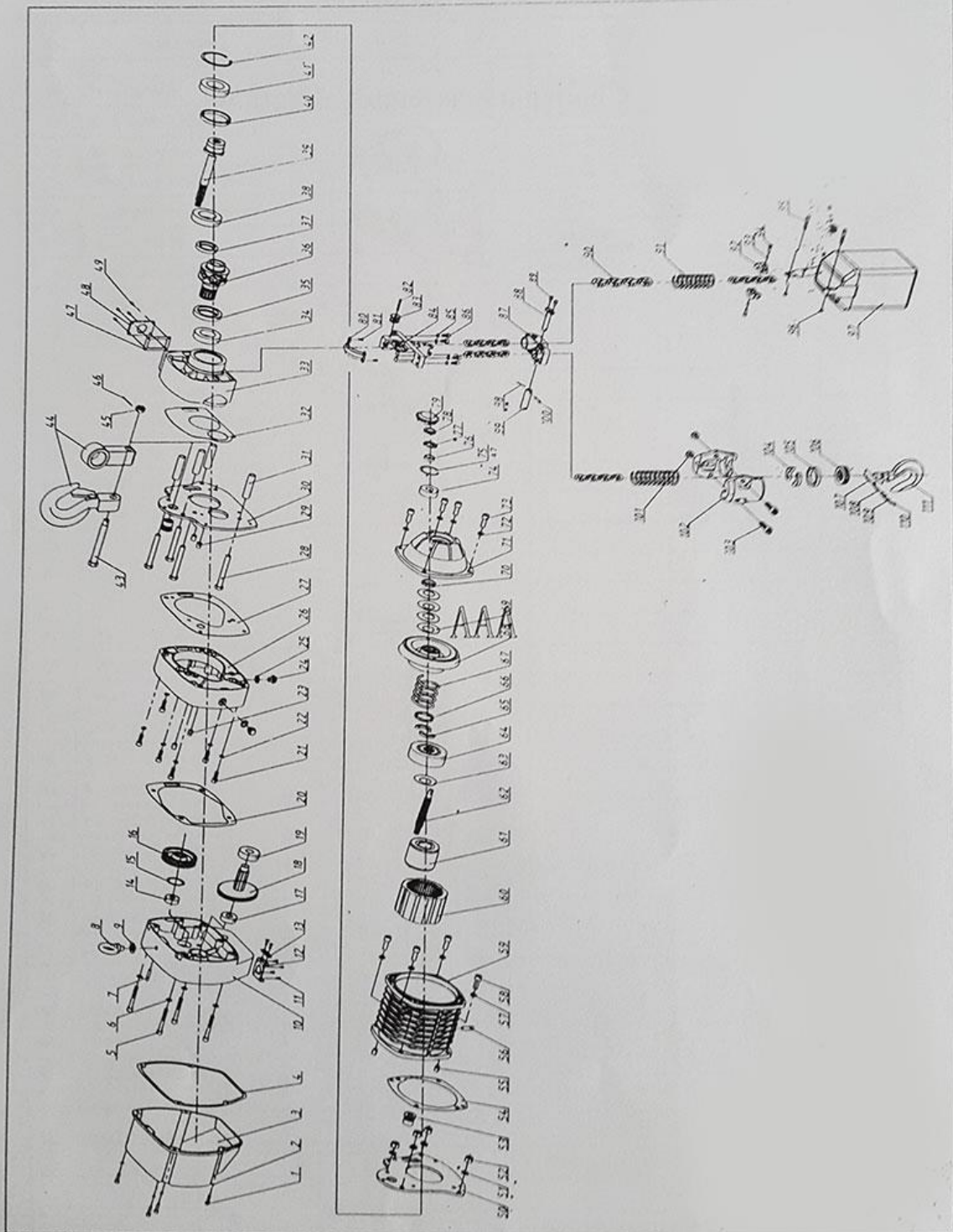
## 3 Chain parts assembly diagram



23	Chain guide assembly	1	
24	Guide bracket assembly	1	
25	Load Chain	1	
26	Chain bucket assembly	1	
27	Limit spring	1	
28	Chain limit ring	1	
S/N	PART NAME	QTY	REMARK

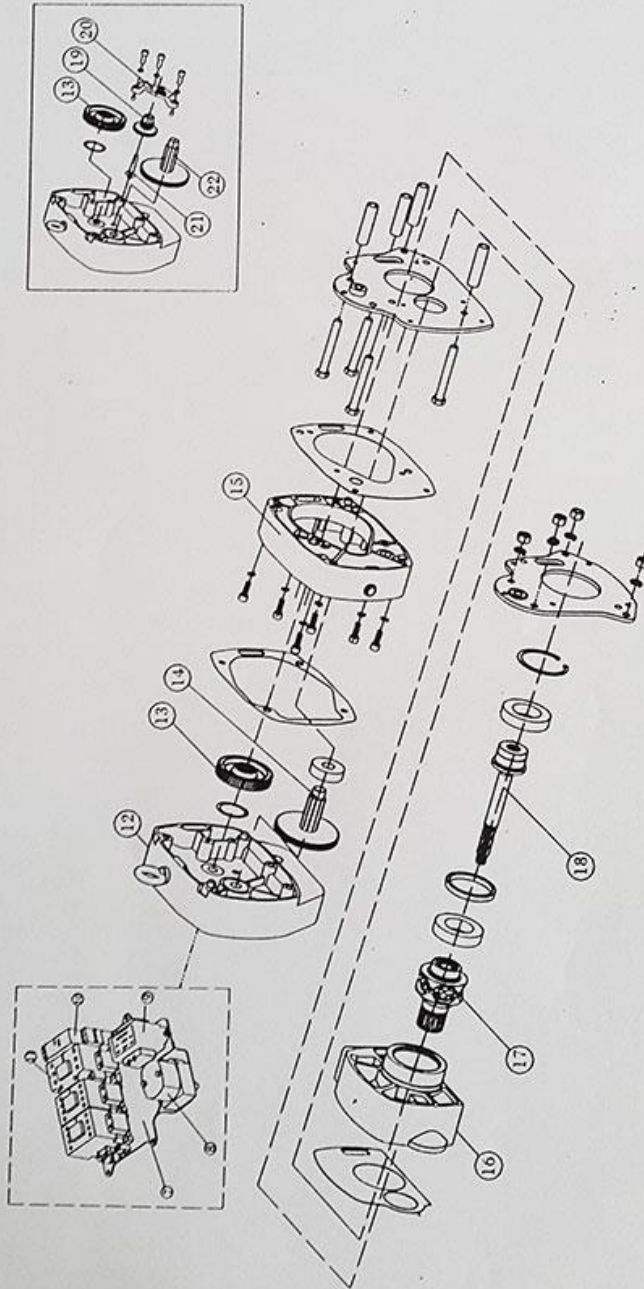


# LIFTKING ELECTRIC CHAIN HOIST



# LIFTKING ELECTRIC CHAIN HOIST

2 Gear box assembly diagram

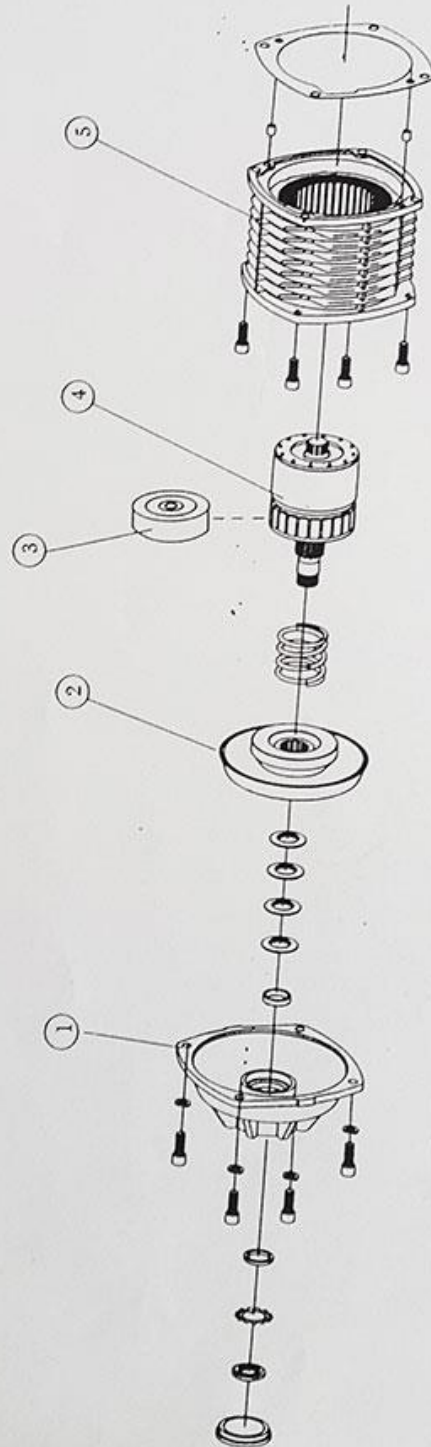


S/N	PART NAME	QTY	REMARK	S/N	PART NAME	QTY	REMARK
7	E-parts installation board assembly	1	Dual speed	15	Intermediate parts assembly	1	
8	Limit switch	1	Dual speed	16	Connection box	1	
9	Transformer	1	Dual speed	17	Gear wheel assembly	1	
10	Inverse phase sequence protecting device	1	Dual speed	18	Output shaft assembly	3	
11	AC contactor	1	Dual speed	19	Duplex gear	1	
12	Gearbox assembly	1		20	Reduction gear bracket assembly	1	
13	Output gear	1		21	Reduction gear stationary shaft	1	
14	Intermediate gear shaft	1		22	Intermediate gear shaft	1	

# LIFTKING ELECTRIC CHAIN HOIST

## 3.4 Structure of electric chain hoist and its parts' details

### 1 Motor assembly



1	Motor rear cover block assembly	1	REMARK:
2	Brake block assembly	1	
3	Guide block	1	
4	Rotor assembly	1	
5	Stator assembly	1	
S/N	PARTNAME	QTY	